

CARING FOR BURN SURVIVORS: A QUICK GUIDE FOR FAMILY PHYSICIANS

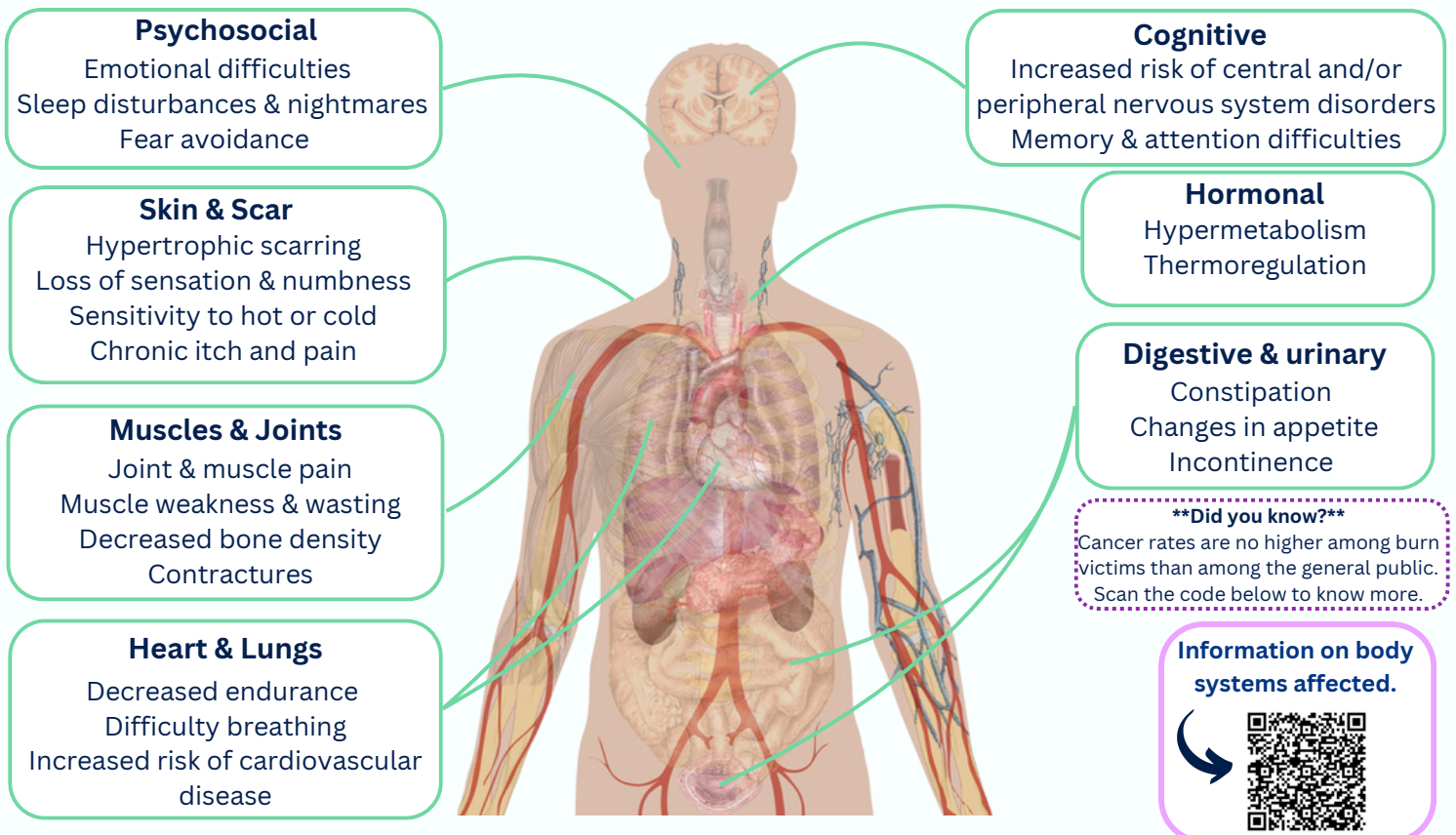
A Comprehensive Tool to Support Long-term Burn Survivor Care in Quebec

This pamphlet addresses topics identified by our study participants, who include: burn survivors, family physicians and healthcare professionals from the Centre d'expertise pour victime de brûlures graves de l'Ouest du Québec (CEVBGOQ). You will find important information on care in Quebec, as well as practical resources and references to support you in your long-term care.

TYPES OF INJURIES FOLLOWED BY BURN CENTERS



BODY SYSTEMS THAT MAY BE AFFECTED IN THE LONG TERM



COMMUNITY REINTEGRATION AFTER A BURN INJURY

Engaging in meaningful occupations after a burn injury is essential for psychological recovery, physical rehabilitation, social connection, and fostering a positive outlook. All of these contribute to a fulfilling post-recovery life.

- Social roles & activities
- Managing responsibilities
- General health & appointments
- Services for family/caregivers
- Returning to work
- Sexuality and intimacy

Resources about community reintegration



**fondation
des pompiers**
du Québec

Villa Medica
HÔPITAL DE RÉADAPTATION
Des gens de cœur pour des êtres de courage

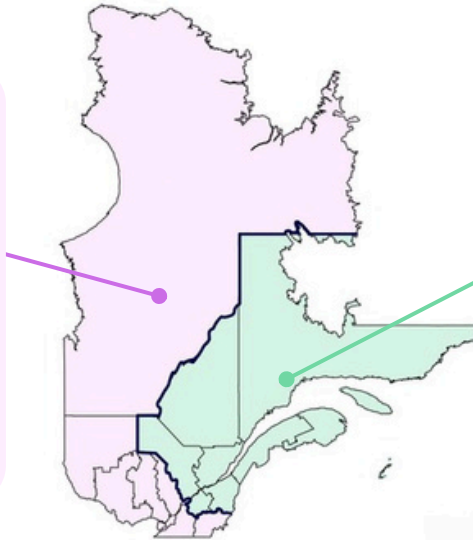


TRAJECTORY OF CARE IN QUÉBEC

Québec is separated into 2 regions*

West Regions (CEVBGOQ)

Nord-du-Québec
Laurentides
Lanaudière
Montréal
Laval
Montréal
Estrie
Abitibi-Témiscamingue
Outaouais
Nunavik
Terres-Cries-de-la-Baie-James



East Regions (CEVBGEQ)

Côte-Nord
Saguenay-Lac-Saint-Jean
Capitale Nationale
Mauricie
Centre-du-Québec
Estrie
Chaudière-Appalaches
Bas-Saint-Laurent
Gaspésie-Îles-de-la-Madeleine

Information about the trajectory and admission criteria



* The trajectory is different for the pediatric clientele.

Acute care

Centre hospitalier de l'université de Montréal (CHUM)
Burn unit

514 890-8121



CHU de Québec-Hôpital de l'Enfant-Jésus
Burn unit

418 525-4444
ext. 65990



Inpatient & outpatient rehabilitation centre

Villa Medica Rehabilitation Hospital
Outpatient clinic severe burns

514-267-1395



Institut universitaire de réadaptation de Québec
Service d'accueil, d'évaluation et d'orientation

418-529-9141
ext. 43719



Community organizations

Entraide Grands Brûlés

514-527-7555
514-778-6555



Association des grands brûlés F.L.A.M.

418-527-7004
info@grands-brules.ca



THE ESSENTIAL CONTRIBUTION OF FAMILY PHYSICIANS

Family physicians play a crucial role in the long-term care of burn survivors, monitoring their global health and ensuring they are referred to the appropriate services and resources, which makes all the difference to their recovery and quality of life. Here are a few testimonials from patients who took part in our study, reflecting your crucial role in their care:

"Listening"

"Takes care of me"

"Professional"

"Knows my file well"

A few words about the family physicians from the burn survivors who participated in our study

"Available"

"Considers Mental health"

"Takes charge of my needs"

"Open to explore different paths"

"Good orientation towards other specialties"

We would like to thank the burn survivors, family physicians, and clinicians, the research team members from Villa Medica Rehabilitation Hospital and the Fondation des pompiers du Québec who participated in this study for their valuable contributions.

By Stephanie Chan, Béatrice Hébert-Sirard, Marguerite Nolin & Anna Tian
Occupational therapy master's students at the School of Physical and Occupational Therapy, McGill University



fondation des pompiers du Québec

